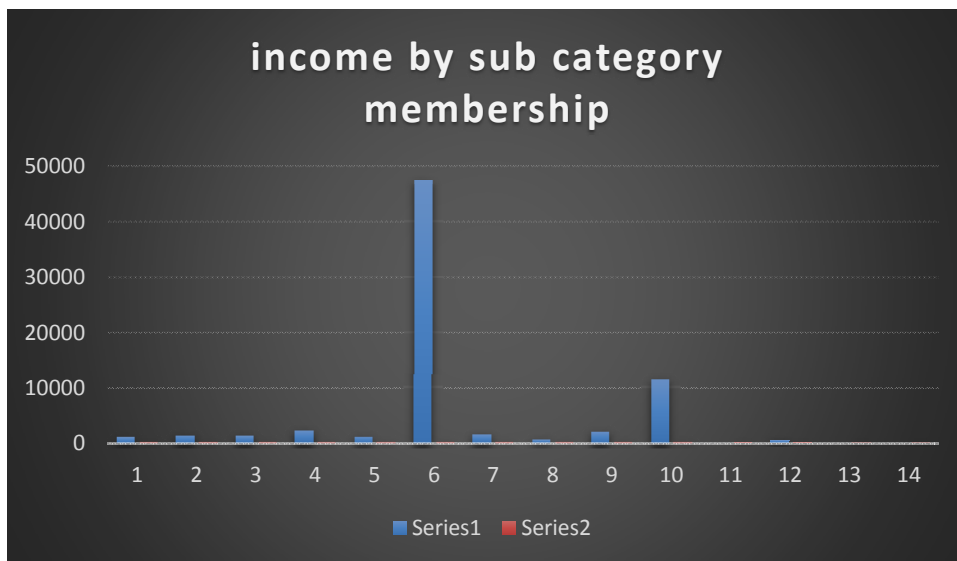
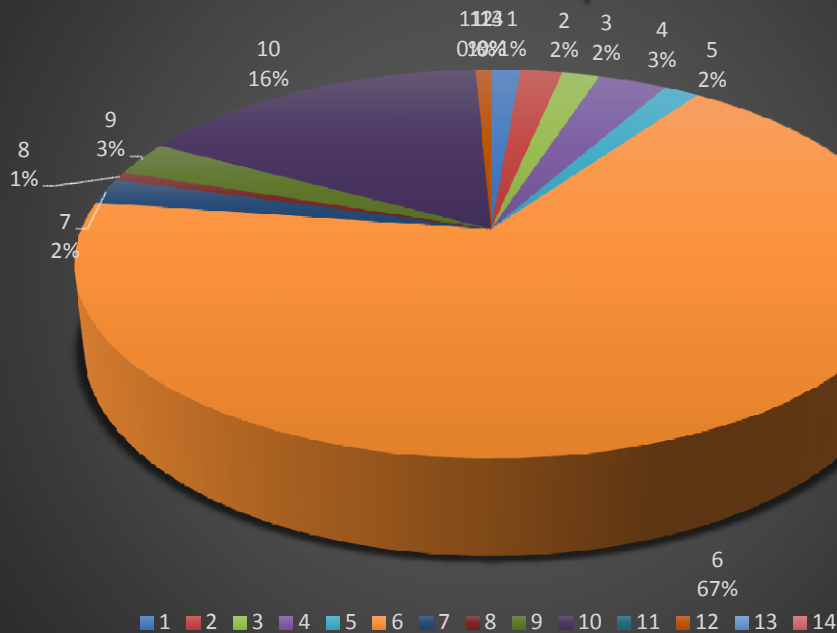


full income sub categories
membership

	income					
can v ire	949	1				
bottle drive	1363	2				
gate donation	1218	3				
tounament	2233	4				
jumpstart	1140	5				
registration	47445	6				
field rental	1500	7				
donations	500	8				
banquets	1990	9				
bingo	11479	10				
player exp		11				
equipment	500	12				
showers		13				
physio refs		14	24 occasions ref and physio			
	70317					



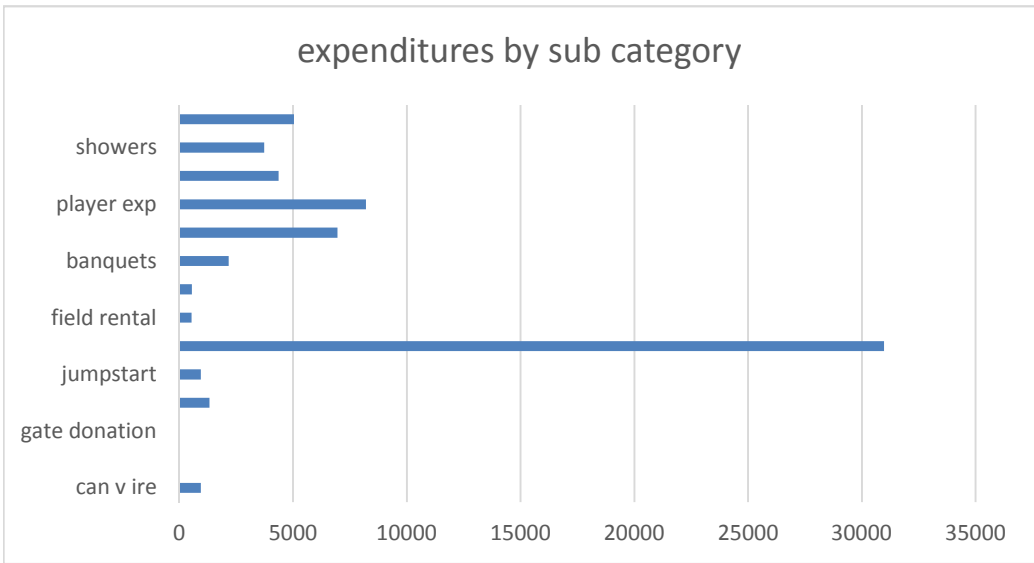
Income sub category membership



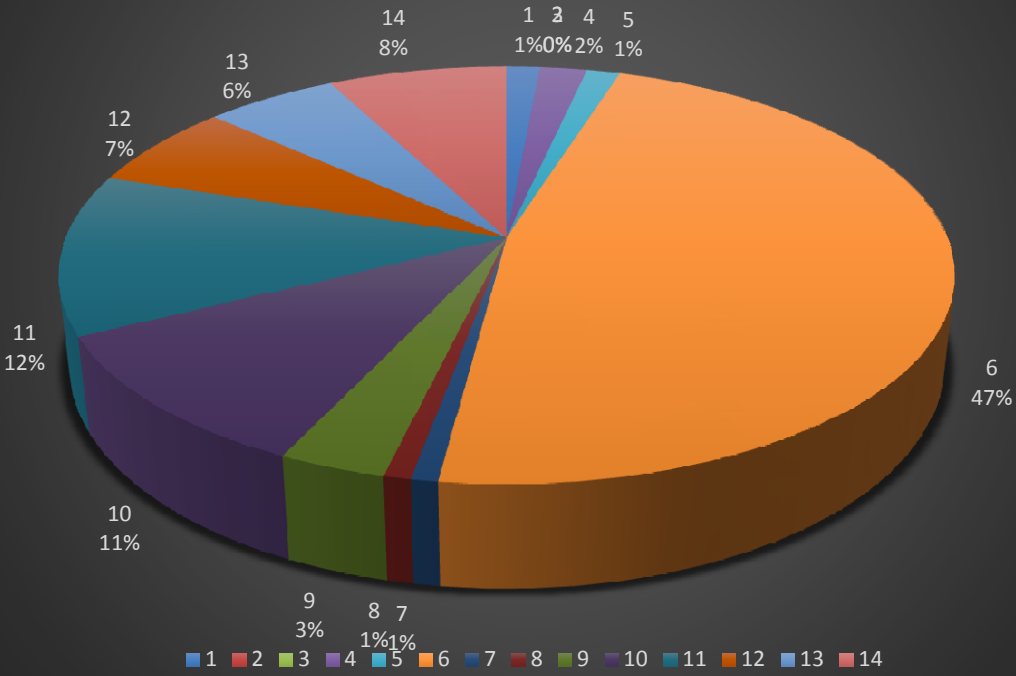
	income \$	#	%
Can v Ire	949	1	1
bottle drive	1363	2	2
gate donation	1218	3	2
tounament	2233	4	3
jumpstart	1140	5	2
registration	47445	6	67
field rental	1500	7	2
donations	500	8	1
banquets	1990	9	3
bingo	11479	10	16
player exp		11	
equipment	500	12	1
showers		13	
physio refs		14	
	70317		

- 1 The numbers are generous. They have included any direct or indirect player based income, so no comparison to the overall income v expenditure chart can be made, as i have moved numbers.
- 2 The main point being that the players can just meet the basic costs of running teams with the income provided by the above listing.
- 3 What is not covered is insurance, loan repayments, maintenance, social food, hall repairs,
- 4 The importance of Rob Stokes, Xmas party , successful club events, and grant money allows the club as a facility to improve .
- 5 the lack of volunteerism increases the pressure on the club as many services are now paid for , so this means it will fall back on the dues to meet the shortfall.

full expenditure by category					
can v ire		1	950		
bottle drive		2			
gate donation		3			
tournament		4	1326		
jumpstart		5	940		
registration		6	30979		
field rental		7	542		
donations		8	546		
banquets		9	2166		
bingo		10	6946		
player exp		11	8200		
equipment		12	4363	not shown on pie chart	
showers		13	3729		
physio refs		14	5040		
			65727		



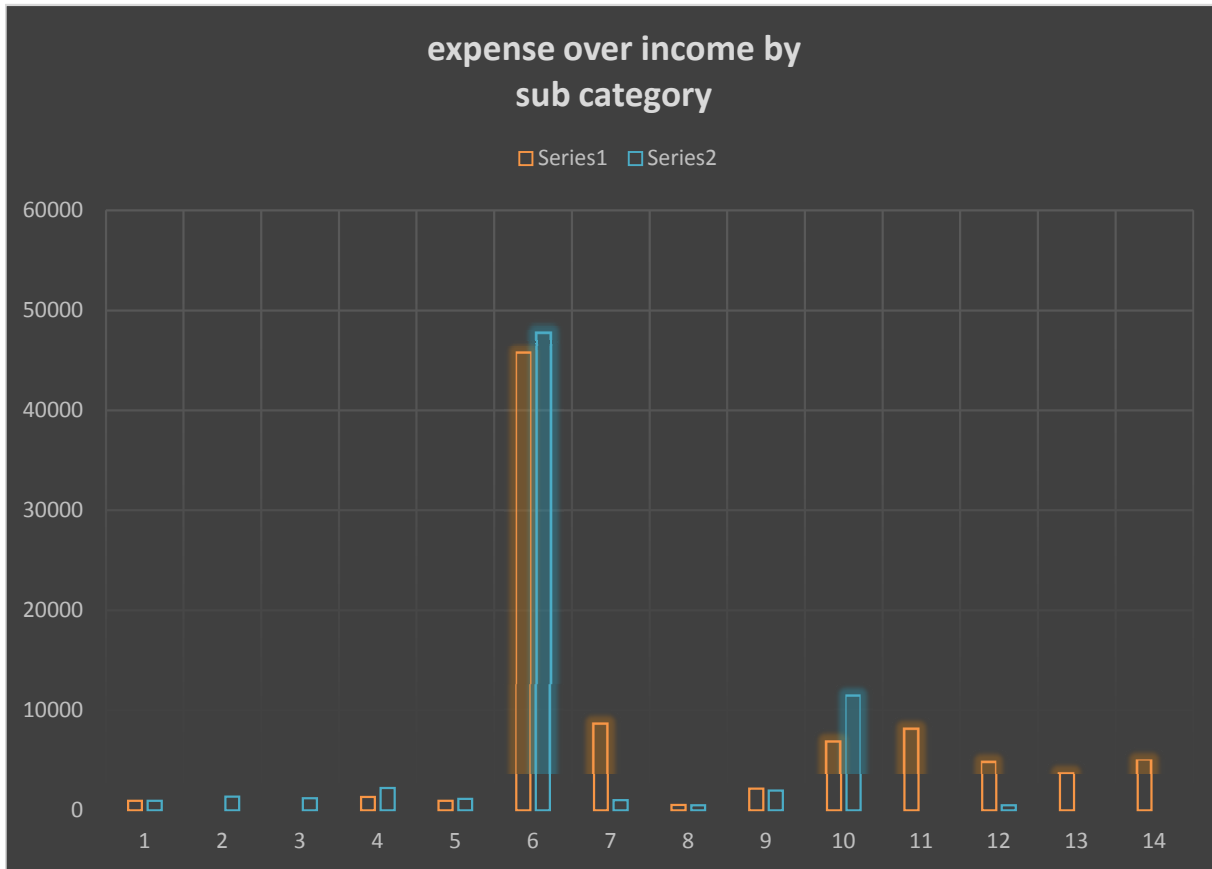
expenses by sub category membership



\$ %

can v ire	1	950	1
bottle drive	2		
gate donation	3		
tounament	4	1326	2
jumpstart	5	940	1
registration	6	30979	47
field rental	7	542	1
donations	8	546	1
banquets	9	2166	3
bingo	10	6946	11
player exp	11	8200	12
equipment	12	4363	7
showers	13	3729	6
physio refs	14	5040	8
		65727	

Expenses over income by sub category membership



green is expense

blue is income

	expense	income	%			
can v ire	950	949	1		0	
bottle drive		1363	2			
gate donation		1218	3			
tournament	1326	2233	4			
jumpstart	940	1140	5			
registration	45794	47855	6			
field rental	8685	1000	7			
donations	546	500	8			
banquets	2166	1990	9			
bingo	6946	11479	10			
player exp	8200		11			
equipment	4863	500	12			
showers	3729		13			
physio refs	5040		14	24 occasions ref and physio		
	89185	70227			5500	income over exp.